



Scotts **Miracle-Gro**

The “Little Things” in Safety

October 4, 2018



Sometimes it is the Little Things-

When it Comes to Safety Costs and Culture,

Sometimes the “Little Things” are more important than you can Imagine

Suppose??

Suppose you could save 15% of the total recordable and lost time incidents in your Company annually

Would you do it?

Slips Trips and Falls – No Big Deal?

When it Comes to Safety in your Plants– Do you think that Slips Trips and Falls are no Big Deal??

What percentage of accidents are Slips Trips and falls??

According to Occupational Safety and Health Administration (OSHA), most general industry incidents involve slips, trips, and falls. They cause 15% of all accidental deaths, and are second only to motor vehicles as a cause of fatalities

What is the main cause of slipping accidents at work?

The majority of trips are caused by obstructions in walkways. Many are caused by uneven or slippery surfaces, Some are falls from elevated platforms

Preventing these accidents is often simple and cost-effective. You need to get all three right (walkways, housekeeping and design and maintenance), to prevent tripping accidents.

What is the average cost of a slip/trip/fall injury

Considering the average cost for a slip, trip or fall injury is \$20,000, (OSHA data)

While the average cost to defend a slip or fall claim is \$50,000,

It makes sense companies need to ensure they have appropriate safety practices and programs in place to address and prevent these injuries.

Different Hazards

First hazard is in the Northern based plants

Ice/Snow/Sleet events on a regular basis

Freezing temperatures that cause walking / driving surfaces to freeze

These require additional work to mitigate

Root Causes

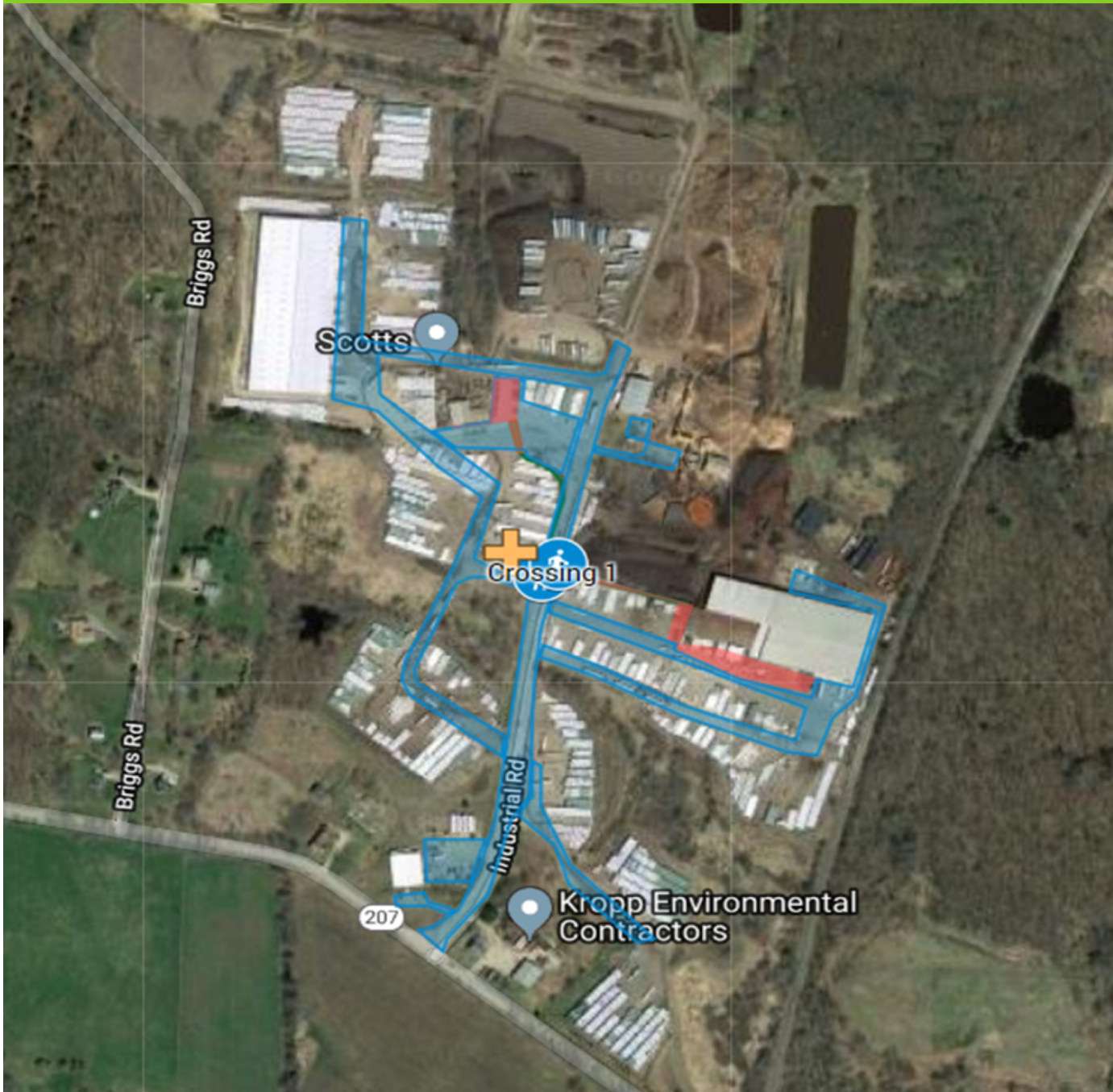
- **Ice/Snow fall at facilities without the proper planning and preparation to operate**
- **Parking lots- entrances to plants, key travel paths for forklifts/loaders, Docks, Loading areas, and any High Traffic area**
- **All too often – there is no Preparation before the ice/snowfall, and no pre-shift activities to prevent incidents.**

The problem often IS-----

Last minute decisions on what to do---
Plant did not identify all critical paths
,walkways, and vehicle driving areas (forklift)
No assigned staff that is responsible for
clearing ice/snow- and applying ice melt –
(sometimes not having ice melt supplies)

Classic conflict – often plants start to operate
before walking surfaces and driving surfaces
are SAFE

Winter Walk/Drive Plan



Snow Removal - Remediation Plan

Designated walkways for pedestrian traffic between the plant, parking lots and main office.
169 views

All changes saved in Drive

Add layer Share Preview

Proposed pedestrian walkway bet...

Individual styles

Path 1

Crossing 1

Path 2

Path 3

Pedestrian Crossing Sign

Crossing 2

Pedestrian Crossing Sign

Areas Plowed

Uniform style

All items (7)

Areas Salted and Sanded

Uniform style

All items (3)

Walkway and Entrance Slip, Trip, Fall Prevention Plan

This walk around should be completed everyday at start-up by 5:15am and turned to Safety office when finished.

Purpose: To reduce the risk of slips, trips, and falls due to ice and slippery walkways and ensure pedestrian traffic areas are identified.

Procedure: Associate to walk around and make sure every entrance and walkway is salted/sanded, and surface is in good condition.

Pedestrian Walking Area
Entrance/Exit

Date: _____ Time: _____

Temperature: _____ Wind: _____ Precipitation: _____

Inspection Performed By: _____

	Condition	Application		Comments
	Snow, Ice, Water	Removed	Salt	
North				
Walkw				
Shippi				
Garage				
Garage				
Fuel C				
Main P				
Walkw				
Produc				

Snow / Ice Surface Treatment Plan - Standard Operating Procedure

Purpose	Identify and prioritize areas where snow/ice surface treatment is required due to presence of pedestrian traffic to reduce risk of slip and fall, and likelihood of short stopping distance when parking areas, walkways, and lot conditions are unfavorable.
Procedure	<p>Snow removal crew along with Supervisor and Plant Manager to monitor potential for inclement weather and thaw/freeze conditions 1-3 days in advance through local weather. When threat of inclement weather and thaw/freeze conditions exist, Supervisor and/or Plant Manager to meet with snow crew day prior to forecasted conditions to initiate Snow Crew Execution Protocol.</p> <p>Supervisor and/or Plant Manager to monitor inclement weather and freeze/thaw conditions during shift and initiate Snow Crew Execution Protocol as required.</p> <p>On night shift (2nd shift) the shift Foremen will monitor surface conditions to execute protocol accordingly.</p> <p>Snow removal crew is to start at the top of the Priority list to remove precipitation and treat surface as indicated in the chart below. Upon/during completion Walkway and Entrance Slip, Trip, Fall Prevention Plan Audit to be conducted by Supervisor or designee.</p>

Snow Crew Execution Protocol

Surface Conditions	1-3in	4-6in	6-10in	10+in	Ice	Thaw & Freeze	Equipment
Start Time	4:30 AM	4:00 AM	3:30 AM	3:00 AM	4:00 AM	4:30 AM	
Dennis Smith	x	x	x	x	x	x	Loader, Plow Truck/Spreader, Skid Steer, Shovel
Al Cronic	x	x	x	x	x	x	Plow Truck/Spreader, Loader, Shovel
James Harely		x	x	x			Loader, Skid Steer, Shovel
JT Harley		x	x	x			Loader, Skid Steer, Shovel
John Misukaitus	2nd shift	2nd shift	2nd shift	2nd shift	2nd shift	2nd shift	Loader, Plow Truck/Spreader, Skid Steer, Shovel
Ryan Rowe	2nd shift	2nd shift	2nd shift	2nd shift	2nd shift	2nd shift	Loader, Plow Truck/Spreader, Skid Steer, Shovel
John Tackes	2nd shift	2nd shift	2nd shift	2nd shift	2nd shift	2nd shift	Plow Truck/Spreader, Shovel
Plant Manager		Blowing/Drifting	x	x	x		Notified by Snow Crew Lead of road conditions to determine

Develop a Detailed Plan

Plan includes

Where to inspect and prepare

What – supply to use in each section (sand, ice melt, salt)

Who - is responsible to perform the work

When – time table prior to shift startup

Plant Manager or Supervisor signs off – key to ensuring this work is done

Non Winter Hazards on Trips/slips/falls

Housekeeping is likely the highest risk of Non Winter tripping hazards in the Mulch and Soil industry

On the production floor there are off specification Full and Empty bags, Strapping, Pallets, Cardboard, Loose Soil or Mulch

Tripping injuries typically occur in the Packaging area, the warehouse and dock area.

Other Hazards – Non Winter Hazards



Other Hazards – Non Winter Hazards



Common Sense Right?

Changing Safety Culture sometimes is not easy –

Taking the time, to plan a winter event, and execute, then follow up on the details drives the right culture to prevent accidents

It is in this Case, the Little Things like proper preparation for Ice/Snow that changes the mindset of your associates

And it can easily prevent a Costly Injury

Other Hazards --

For Example ---- an injury due to an unexpected situation

**Falling from loaders/dozers – when an associate exits the equipment is he facing away from the equipment --
- Or Towards the equipment**

Associates facing away from the equipment can cause boot tread getting caught in the step tread causing falls

3 point contact at all times descending equipment and always face the ladder



Other Hazards --





Other Hazards --

Another Common trip hazard is Anchors in concrete floors from previous equipment that has been removed where the anchor is above floor level,

Causes trip hazard –
Cut these down below grade

Other Hazards --



Some “Little Things” to consider

Creating a Company - Safety Mission Statement – To drive the safety Culture – Then adhere to that statement in daily operations

Do a Safety Survey to all Associates to learn where your Associates are in regards to Safety

Consider performing a “Hazard Hunt” asking associates to tell you where the Hazards are “perceptions are everything”

Consider creating “Cardinal Rules” and enforcing them

Every Accident – share with all managers/supervisors including other facilities to prevent Tomorrow's accident from happening

Things to consider

Make Housekeeping a major initiative – and make it “Stick”

Sloppy housekeeping is cancerous – it gives permission to let the plant floor be cluttered with pallets, bags, trip hazards –

Only you as Leaders have the power and ability to set the expectation to have a Clean Plant, that is Safe to Work in.

Employees may not even know that they want and need a clean plant until you push for it and set the standard

Changing Safety Culture -

Take a Stand -

Make definitive statements with your Associates --- Examples

All Accidents can be prevented

Your Company is responsible for your Safety – and you are Accountable as well to protect yourself and others

Empower associates – When it comes to Safety – empower all associates to comfortably be able to report true risks

Make sure your Associates know Safety is about “Them” and not the company – Associate Centered

Celebrate your Achievements/Milestones

Summary

Safety of your Associates is Good Business

You Can't "Pretend" that you care about Safety – your associates can see right through that – You have to "Walk the Walk"

Focus on "Un-Safe" Acts – and strip away personal opinions and preferences - Focus on what is "undeniable"

It Can be done – It is up to You

Where do you your company to want to be?

Summary

Safety of your Associates is Good Business

You Can't "Pretend" that you care about Safety – your associates can see right through insincerity

Focus on "Un-Safe" Acts – and strip away personal opinions and preferences - Focus on the "undeniable"

It Can be done – It is up to You

Where do you your company to want to be?